

THIS DRAWING IS UNPUBLISHED. RELEASED FOR PUBLICATION  
 © COPYRIGHT - By - ALL RIGHTS RESERVED.

LOC	DIST	REVISIONS					
FT	0	P	LTR	DESCRIPTION	DATE	DWN	APVD
			D1	REVISED PER ECO-11-004917	11MAR11	RK	HMR

SPECIFICATIONS:

MATERIALS:

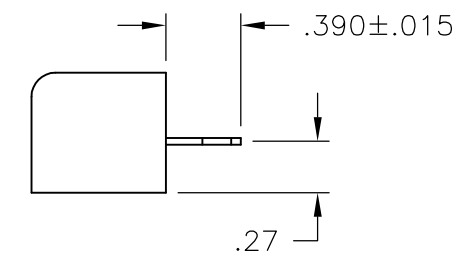
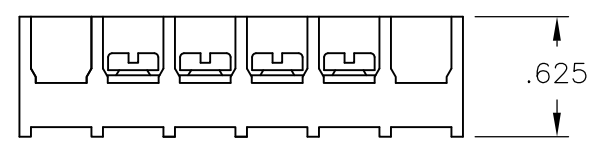
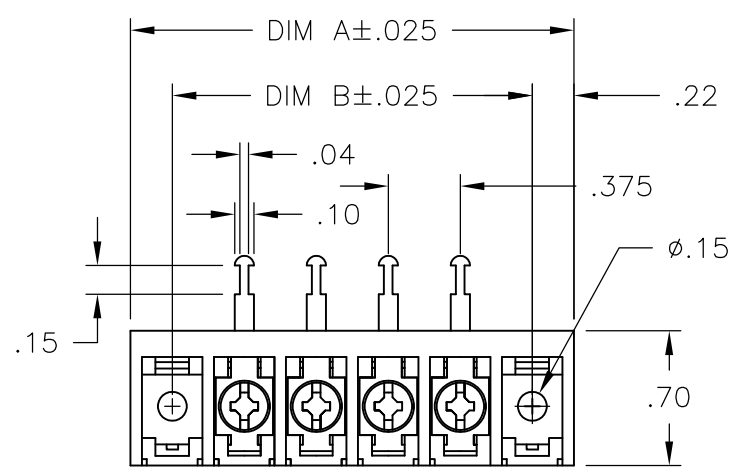
HOUSING: POLYAMIDE, (BLACK) UL94-0  
 TERMINALS: COPPER ALLOY, TIN PLATE  
 SCREWS: ZINC PLATED STEEL WITH CLEAR CHROMATE COATING

ELECTRICAL:

RATING: 25A 300V  
 WIRE RANGE: 12 - 22 AWG

MECHANICAL:

MAXIMUM TORQUE RATING: 7 IN.-LBS.



10.875	11.311	28	6STR-28-008	2-1546242-8
10.500	10.936	27	6STR-27-008	2-1546242-7
10.125	10.561	26	6STR-26-008	2-1546242-6
9.750	10.186	25	6STR-25-008	2-1546242-5
9.375	9.811	24	6STR-24-008	2-1546242-4
9.000	9.436	23	6STR-23-008	2-1546242-3
8.625	9.061	22	6STR-22-008	2-1546242-2
8.250	8.686	21	6STR-21-008	2-1546242-1
7.875	8.311	20	6STR-20-008	2-1546242-0
7.500	7.936	19	6STR-19-008	1-1546242-9
7.125	7.561	18	6STR-18-008	1-1546242-8
6.750	7.186	17	6STR-17-008	1-1546242-7
6.375	6.811	16	6STR-16-008	1-1546242-6
6.000	6.436	15	6STR-15-008	1-1546242-5
5.625	6.061	14	6STR-14-008	1-1546242-4
5.250	5.686	13	6STR-13-008	1-1546242-3
4.875	5.311	12	6STR-12-008	1-1546242-2
4.500	4.936	11	6STR-11-008	1-1546242-1
4.125	4.561	10	6STR-10-008	1-1546242-0
3.750	4.186	9	6STR-09-008	1546242-9
3.375	3.811	8	6STR-08-008	7-1437654-2
3.000	3.436	7	6STR-07-008	796988-7
2.625	3.061	6	6STR-06-008	1546242-6
2.250	2.686	5	6STR-05-008	9-1546158-4
1.875	2.311	4	6STR-04-008	1546242-4
1.500	1.936	3	6STR-03-008	796988-6
1.125	1.561	2	6STR-02-008	8-1546158-9

DIM B	DIM A	NO. OF POS.	BUCHANAN PART NO.	PART NO.
-------	-------	-------------	-------------------	----------

THIS DRAWING IS A CONTROLLED DOCUMENT.		DWN E. ZANOLINI 04FEB2002	<b>STE</b> TE Connectivity													
DIMENSIONS: INCHES		CHK S. YODER 04FEB02														
TOLERANCES UNLESS OTHERWISE SPECIFIED:		APVD S. YODER 04FEB02	NAME													
<table border="0"> <tr><td>0 PLC</td><td>± -</td></tr> <tr><td>1 PLC</td><td>± -</td></tr> <tr><td>2 PLC</td><td>± .01</td></tr> <tr><td>3 PLC</td><td>± .005</td></tr> <tr><td>4 PLC</td><td>± -</td></tr> <tr><td>ANGLES</td><td>± 1/2</td></tr> </table>		0 PLC	± -	1 PLC	± -	2 PLC	± .01	3 PLC	± .005	4 PLC	± -	ANGLES	± 1/2	PRODUCT SPEC	6STR-XX-008	
0 PLC	± -															
1 PLC	± -															
2 PLC	± .01															
3 PLC	± .005															
4 PLC	± -															
ANGLES	± 1/2															
MATERIAL		APPLICATION SPEC	SIZE	CAGE CODE												
FINISH		WEIGHT	A3	00779												
		DRAWING NO		RESTRICTED TO												
		G-7-1437654-2		-												
		CUSTOMER DRAWING		SCALE NTS SHEET 1 OF 1 REV D1												